

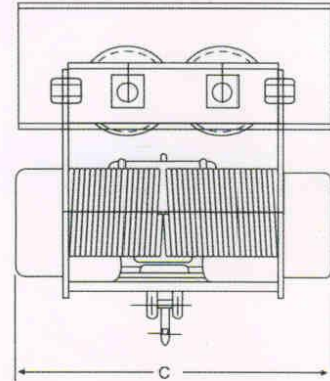
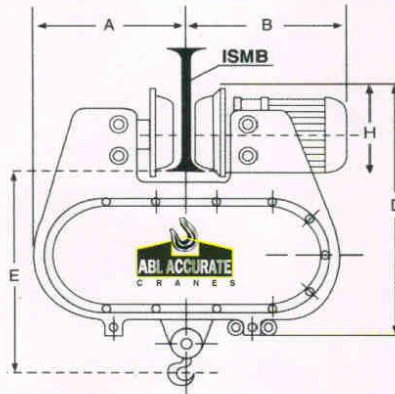
- * HOISTS
- * CRANES
- * JIB CRANES
- * GOODS LIFTS

Basic Application :

- * General Industry
- * Steel Mills
- * Foundries
- * Scrap Yards
- * Power Plants
- * Chemical Plants
- * Cement Plants



FOR SAFE & ACCURATE LIFTING



TECHNICAL SPECIFICATIONS OF HOISTS TO IS : 3938-1983

CAPACITY IN KGS	HT.OF LIFT IN MTRS	WIRE ROPE DIA-MM	FALLS OF ROPE	SPEED M/MIN		MOTOR HP		FLANGE WIDTH OF I-BEAM	DIMENSIONS-MM						APPWT IN KGS
				HT	CT	HT	CT		A	B	C	D	E	H	
250	6	6	2	4/6	10/15	0.5	0.25	90-125	290	400	675	420	425	170	132
500	6	6	2	4/5	10/15	0.5	0.25	90-125	290	400	675	420	450	170	145
1000	6	8	2	3.5/4	10/15	1.25	0.25	90-125	290	400	700	420	475	170	165
2000	6	10/8	2/4	3.5/4	10/15	3.0	0.5	100-140	310	525	1000	450	625	175	375
3000	6	12/10	2/4	3.5/4	10/15	5.0	0.5	125-140	375	550	1050	700	650	210	400
5000	6	12	4	3.5/4	10/15	7.5	0.5	140-210	400	550	1100	750	750	219	525
7500	6	14	4	2.5/3	10/15	10.0	0.75	150-210	540	645	1490	925	1000	290	950
10000	6	16	4	2.5/3	10/15	12.5	1.00	150-210	550	645	1680	940	1075	320	1150
15000	6	18	4	2/2.5	10	12.5	1.50	210	****	****	****	****	****	****	1300

**** Available on request.

WIRE ROPE HOISTS

ABL Accurate electric wire rope hoists are designed in modular construction in accordance with IS: 3938, ABL Accurate hoist are simple in repairs & cuts downs the maintenance time. The hoist are sturdy with adequate factor of safety. ABL Accurate hoist are built to low headroom. Gears are running on antifriction ball bearing in oil bath lubrication motors are crane duty conforming to IS: 325. "Fail to safety" brakes are used which automatically operates in case of power failure. Tested quality steel wire rope to IS: 2266 and forged hooks conforming to IS: 3815 are used. Hoist is operated through push button station with control voltage of 110V, 42V or 24V. ABL Accurate hoist can also be built as per customer's requirement with 10% micro speed to normal speed, with flexible trolley to negotiate curved path, with higher speeds and higher lifts. The hoist can also be built to suit steel mill duty, foundries & chemical plants.

WIRE ROPE HOISTS

ABL Accurate electric overhead traveling cranes are designed with adequate factor of safety in accordance to duty classification to IS: 3177. The structural parts of the cranes are designed & manufactured as per customer's requirement-like single girder cranes, double girder cranes, Jib cranes & HOT cranes.

Manufactured By :

Khodiyar ENGINEERS



Works : Plot No. 363, Road No.8, G.I.D.C.
Kathwada, Ahmedabad - 382430.(Guj) INDIA.
Phone : +91-79-22900107, 9721646410, 9825042452
E-mail : khodiyarengineers@yahoo.com

GOODS LIFT

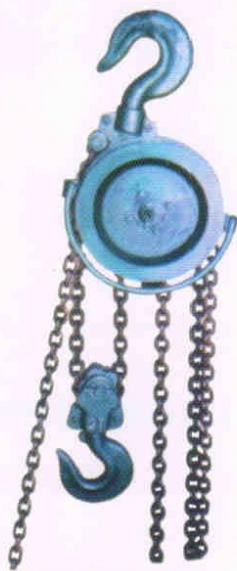
ABL Accurate goods lifts are specially designed for lifting the material from one floor to another floor at different levels. The material is safely lifted in enclosed steel cage which is being guided in steel guide structure, The hoisting & lowering of cage is being done by electric wire rope hoist. Cage is operated through interlocked push buttons and limit switches for safe operation.

ABL Accurate counter weight type goods lift are designed for smooth operation for lifting the chemicals and explosive material to any elevated levels from ground. The use of traction type pulley eliminate the limits of lifts. Therefore, for higher lifts this type is widely used. Capacity 500 Kgs. to 5000 kgs.

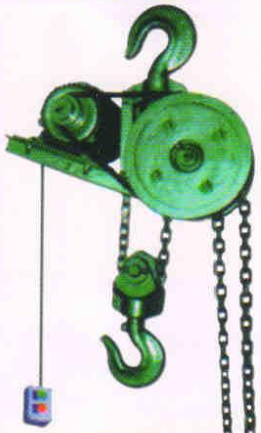
We reserve the right to change design and specifications without prior notice



Motorised (Electric Operated) Chain Pulley Block



SPUR GEAR CHAIN PULLEY BLOCKS



MONORAIL GEAR TROLLEYS FOR "I" SECTION BEAMS

CAPACITY

- 0.5 Ton to 5.0 Ton With GR-80 Alloy Steel Load
- Available with Single Phase Three Phase motors
- With Mechanical, Electro Magnetic Brake



FOR SAFE & ACCURATE LIFTING

CONSTRUCTION DETAILS (MANUALLY CHAIN PULLEY BLOCK / MOTORISED CHAIN PULLEY BLOCK)

- BODY** : Built of steel plates and without any welding joints. Rigid with spacers and accurately drilled.
- LOAD CHAIN WHEEL** : Load chain wheels are made out of Malleable / S.G. iron casting with accurate chain sprockets for smooth running of load chain without undue wear of sprockets.
- LOAD CHAIN** : Load chain is of GR. 80 as per IS-6216 tested to breaking load. The chain is made from electrically resistance welded alloy steel duly heat treated for ductility, toughness and wear resistance, accurately calibrated for smooth running in load wheels.
- HOOKS** : Steel forged hooks are confirming to IS: 8610 and fitted in upper & lower blocks made out of heavy duty malleable casting / M.S. slabs.
- GEARS** : Gears are made out of Nickel-Chrome case hardened alloy steel duly heat treated for minimum wear. All gears are accurately machined and teeth generated on Hobbing Machine to involute corrected for high bending stresses and low wear. All gears are mounted on Ball Bearings for smoother operation & low wear. All gears are grease lubricated and covered with air tight cover.
- ELECTRIC MOTORS** : Totally enclosed squirrel cage induction motor as per IS 325 specially made for hoist duty with high starting torque and suitable for frequent start / stops. The motor is wound normally in B/F class insulation and suitable for 400/440 Volts, 3 phase, 50 Cycle A.C. supply. Motors are suitable for Class-II intermittent duty. Motors are rated for 30 minutes with 40% C.E.D.
- BRAKE** : Heavy duty electro-magnetic disk type fail safe 3 phase A.C. Brakes are provided. Brakes are spring loaded "failsafe" type, it means in case of power failure brakes act immediately. Brakes are easily accessible for adjustments and maintenance.
Alternatively we can supply Mechanical Screw and Friction disc type self actuating load pressure brake which ensures safety at all position.
- CONTROL PANEL** : Housed in sheet metal box and comprising of following items.
 - Siemens or equivalent make Forward / Reverse air brake connector with 24/110 volts operating coils.
 - Siemens or equivalent make Triple pole thermal overload relay of auto reset type.
 - Glass fuse in control circuit.
 - 440 V to 24 V/ 110 V step down transformer for pendant control operation
 - Pendant type push button station complete with suspension wire rope & cable.
- DRIVING UNIT**: The driving unit comprise of heavy duty roller chain drive with pinion and main sprocket wheel gears. The drive unit is enclosed in M.S Sheet cover.

Electric chain pulley blocks can be supplied with gear trolley or with electrically operated trolley.

It can be also supplied with 1 phase motor instead of standard 3 phase motors. In that case, instead of Electro-Mag. Brake. Mechanical Brake shall be provided.

SPECIFICATIONS OF MOTORISED (ELECTRIC OPERATED) CHAIN PULLEY BLOCK

CAPACITY (in Metric Kgs.)	1000	2000	3000	5000
LIFT S.T.D.	3M	3M	3M	3M
MOTOR H. P. HOSTING	1.5 HP	2 HP	3 HP	4 HP
SPEED METER/ MINUTE	3 -4M / MIN	3-4M / MIN	3-4M / MIN	3-4M / MIN
WEIGHT IN KGS.	65 KG.	67 KG.	110 KG.	125 KG.
NO. OF FALLS	2 NOS.	2 NOS.	2 NOS.	2 NOS.
EXTRA WT. PER MTR.	3 KG.	3 KG.	4 KG.	7 KG.

MONORAIL GEAR TROLLEYS FOR " I " SECTION BEAMS

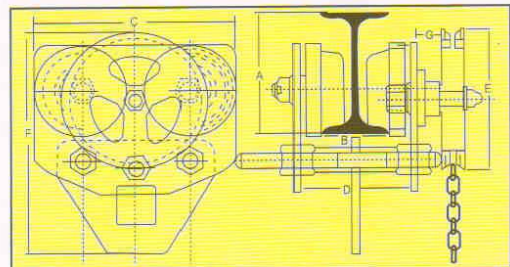
Capacity	I-Beam			C	D	D	E	F	G
	A	B	B						
	MIN	MAX		MIN	MAX				
500KG	125	75	100	240	136	161	150	234	30
1000KG	150	75	125	305	140	190	215	278	38
2000KG	150	75	150	316	140	215	215	340	38
3000KG	200	100	180	330	165	245	260	403	40
5000KG	250	100	180	405	167	247	320	445	51
7500KG	400	140	210	618	228	298	400	705	58
10000KG	400	140	210	618	228	298	400	705	58

ALL DIMENSIONS ARE IN mm.

SPUR GEAR CHAIN PULLEY BLOCKS

Capacity in Metric kgs.	1000	2000	3000	5000	7500	10000
Number of falls	1	2	2	2	3	4
Pull on hand chain kgs.	26	28	55	49	53	57
Net weight with 3 Meter Lift kgs.	24	34	52	77	125	168

SPECIFICATIONS ARE SUBJECTED TO TYPE OF APPLICATIONS



Manufactured By :

Khodiyar ENGINEERS



Works : Plot No. 363, Road No.8, G.I.D.C.
Kathwada, Ahmedabad - 382430. (Guj) INDIA.
Phone : +91-79-22900107, 9712646410, 9825042452
E-mail : khodiyarengineers@yahoo.com